

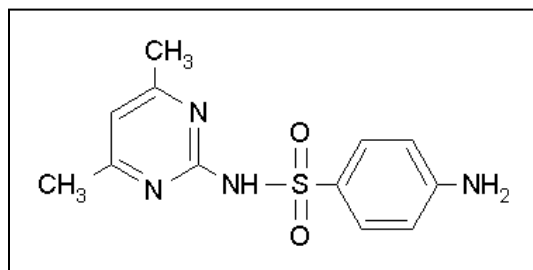
ELISA Kit for Environmental Pollutants

Veterinary Medicine

Sulfamethazine ELISA Kit

- ◇ The antibody binds Sulfamethazine and does not cross-react with other related or non-related antibiotics.
- ◇ The assay range is between 0.05 ppb and 5 ppb. This supersensitive assay allows the determination of Sulfamethazine in a wide range of environmental samples (water, soil, sediment, fish tissue, etc.).
- ◇ Total time for measurement is less than 60 minutes.
- ◇ The kit (100 Tests), a magnetic particle format with ready to use reagents, enables faster assay kinetics, super sensitivity, and the simultaneous measurement of multiple samples at a reasonable cost.

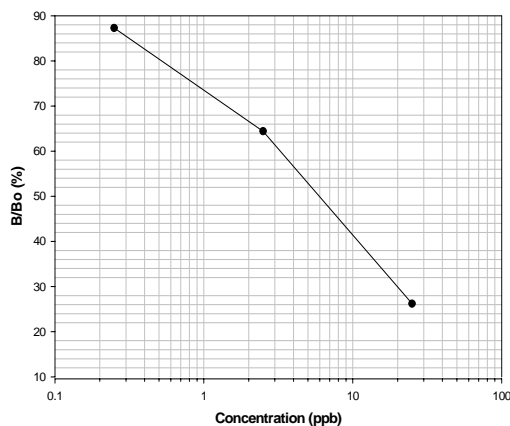
Chemical Structure



Polychlorinated biphenyls (PCBs), are a group of synthetic industrial compounds which contain a varying number of chlorine atoms substituted on a biphenyl molecule. Several industrialized countries produced PCBs, which were marketed under various trade names (Aroclors[®], Kanechlors[®], etc.). PCBs are chemically inert and stable when heated, these properties had allowed them to persist in the environment for long periods of time. GC/MS, a generally employed method for quantitative PCBs analysis, requires expensive instrumentation as well as complex and time-consuming extraction process with hazardous organic solvent.

This ELISA test kit detects PCBs in environment samples at the ppt levels.

PCB (Aroclor 1254) Standard Curve



Samples containing PCBs within the dynamic range (0.25-25 ppb) can be directly tested in the assay after filtration.

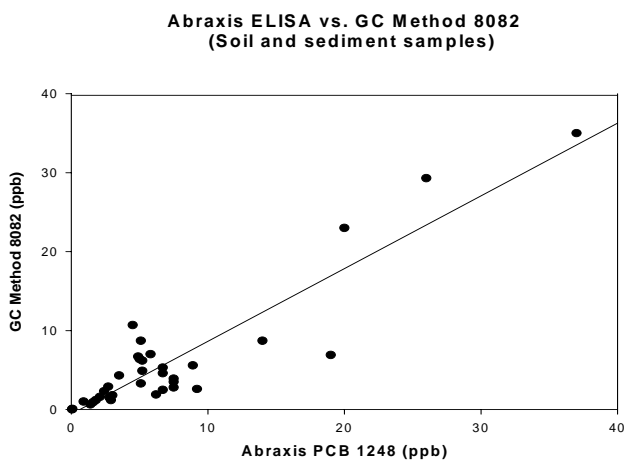


Cross-reactivity Pattern

Cross-reactivity of the Abraxis Sulfamethazine ELISA expressed as (%). The concentration of a compound required to displace 50% (50% B/Bo) divided by the concentration of sulfamethazine required to displace 50% X 100.

Compound	(% Cross-reactivity)
Sulfamethazine	100
Sulfamerazine	5.2
Sulfadiazine	0.7
Sulfachloropyrazine	1.0
Sulfachloropyridazine	0.1
Sulfamethoxy pyridazine	<0.1
Sulfamethoxydiazinium	0.1
Sulfamethoxydine	<0.1
Sulfamethoxazole	<0.1
Sulfadimethoxine	0.6

Sample Correlation



This ELISA exhibits high correlation with GC Method 8082 ($r = 0.91$)

Kit Format

Magnetic Particle format and reagents PN 530001

PCB 1254 Calibrator set included, other sets (1268, 1260, 1248, 1242, 1262, 1232, 1016, 1221) available upon request.

Manufactured by
Abraxis LLC
54 Steamwhistle Drive
Warminster, PA 18974
Phone: (215) 357-3911
FAX: (215) 357-5232
Email: info@abraxiskits.com



